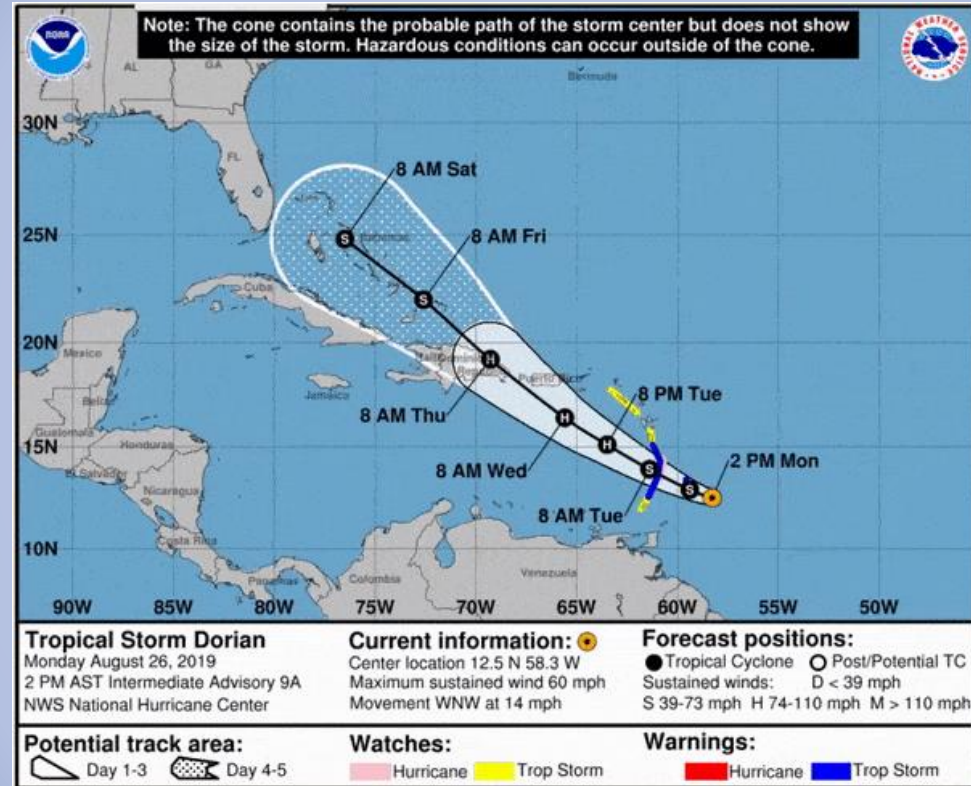


National Hurricane Center Track Forecast Cone, aka the Cone of Uncertainty or the Cone of Concern



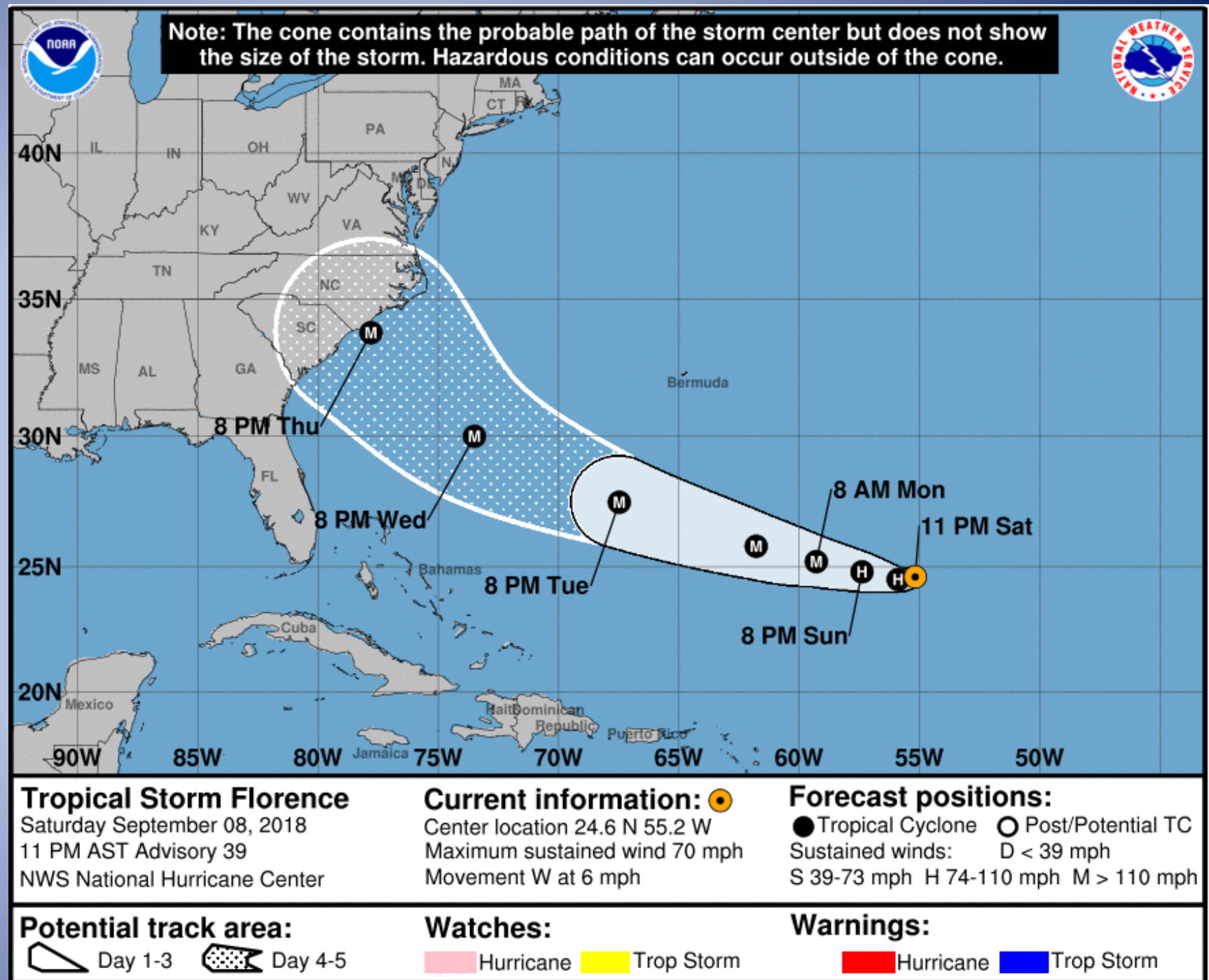
Virginia Enzor NC4VA
Central Carolina SKYWARN Emergency Coordinator
NC Deputy AUXCOMM Coordinator Statewide

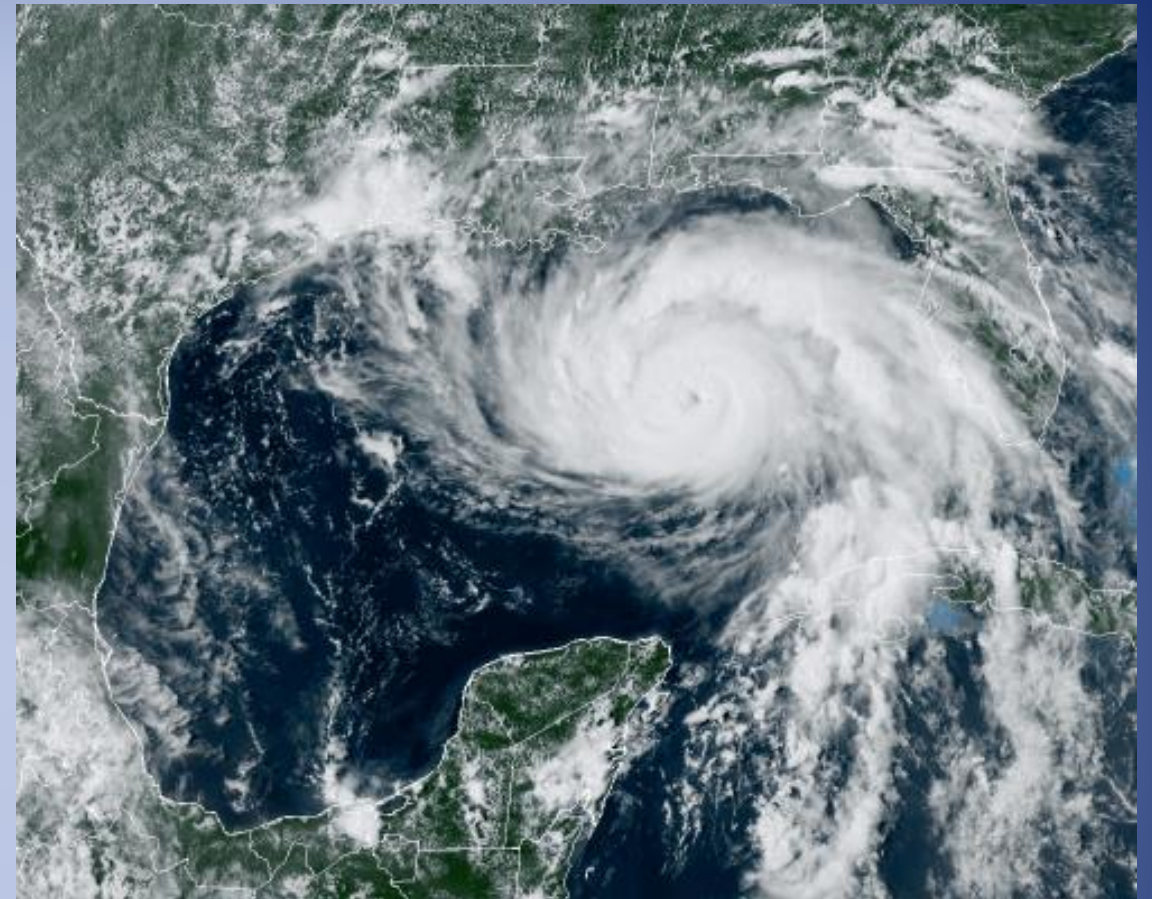
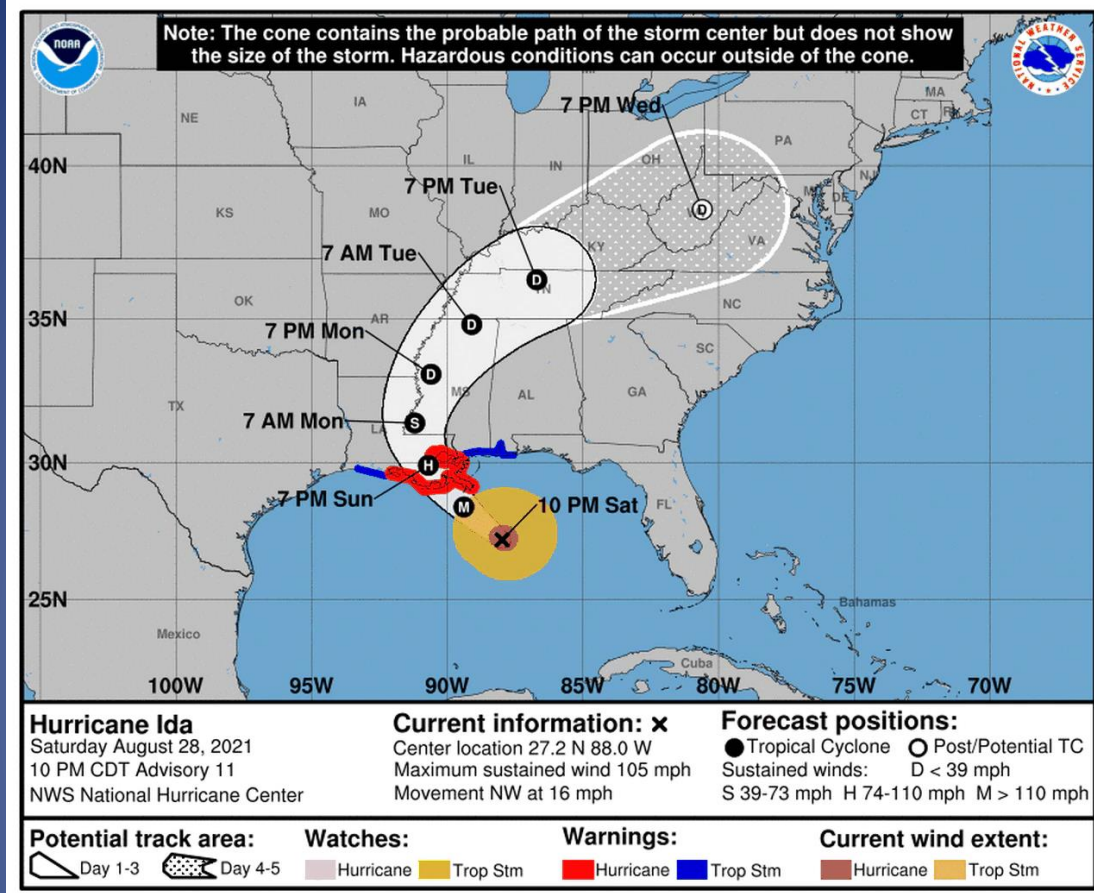
Track Forecast Cone

The cone represents the probable track of the center of a tropical cyclone.

The cone is used to show the forecast up to 5 days out from the last recorded position of the storm.

The size of the cone is drawn so that about two-thirds of the time, the center of the storm will remain in the cone.





A satellite view of Hurricane Ida as it churned toward the U.S. Gulf Coast on Aug. 28, 2021.
(Image credit: CIRA/NOAA)

The cone does not show the size of the storm. Hazardous conditions can occur outside of the cone.

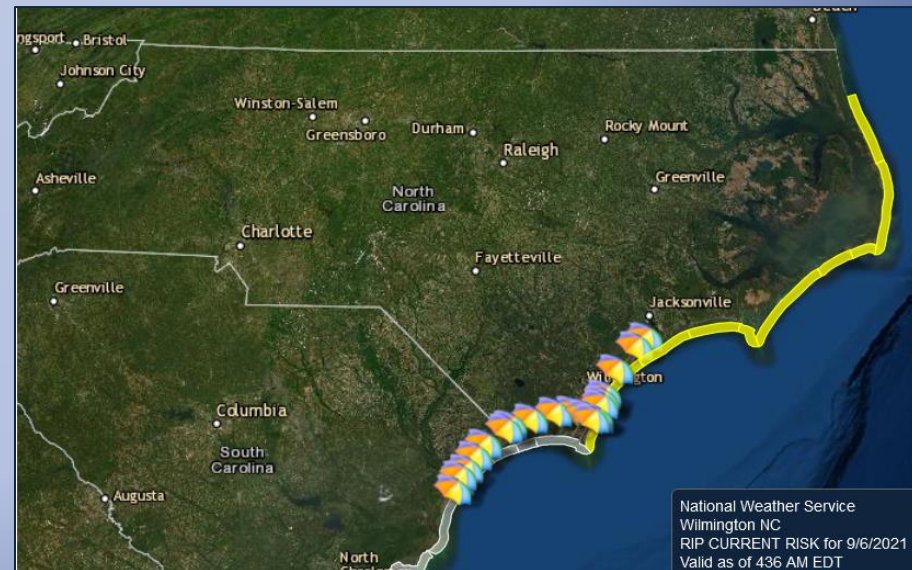
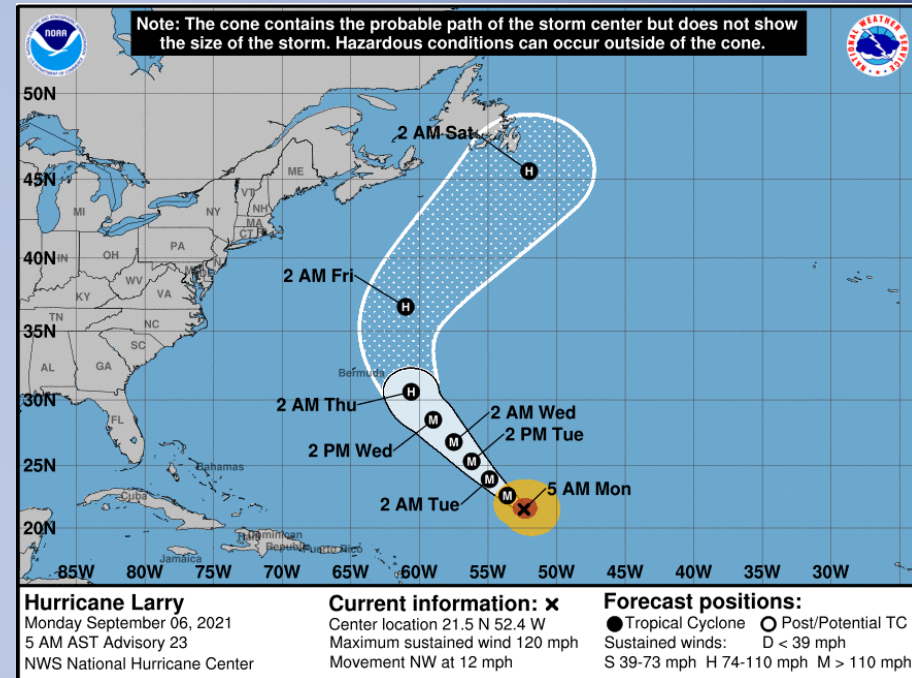
Compare the current position of the center of Ida as a point on the left with the actual size of the hurricane on the right.

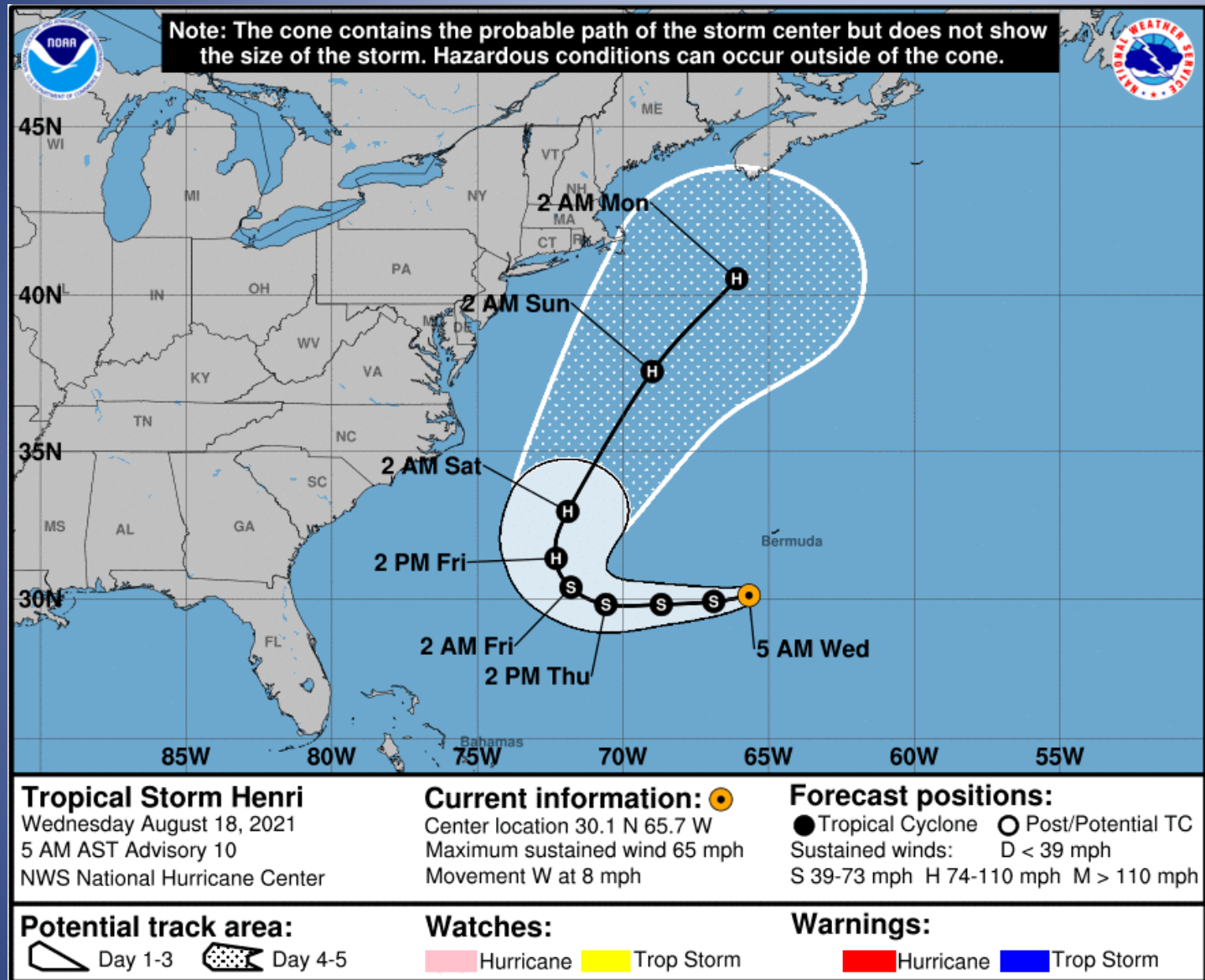
A hurricane well off our coast can still create hazards!

“Larry stays off the coast but will cause an increased threat of rip currents later this week..”



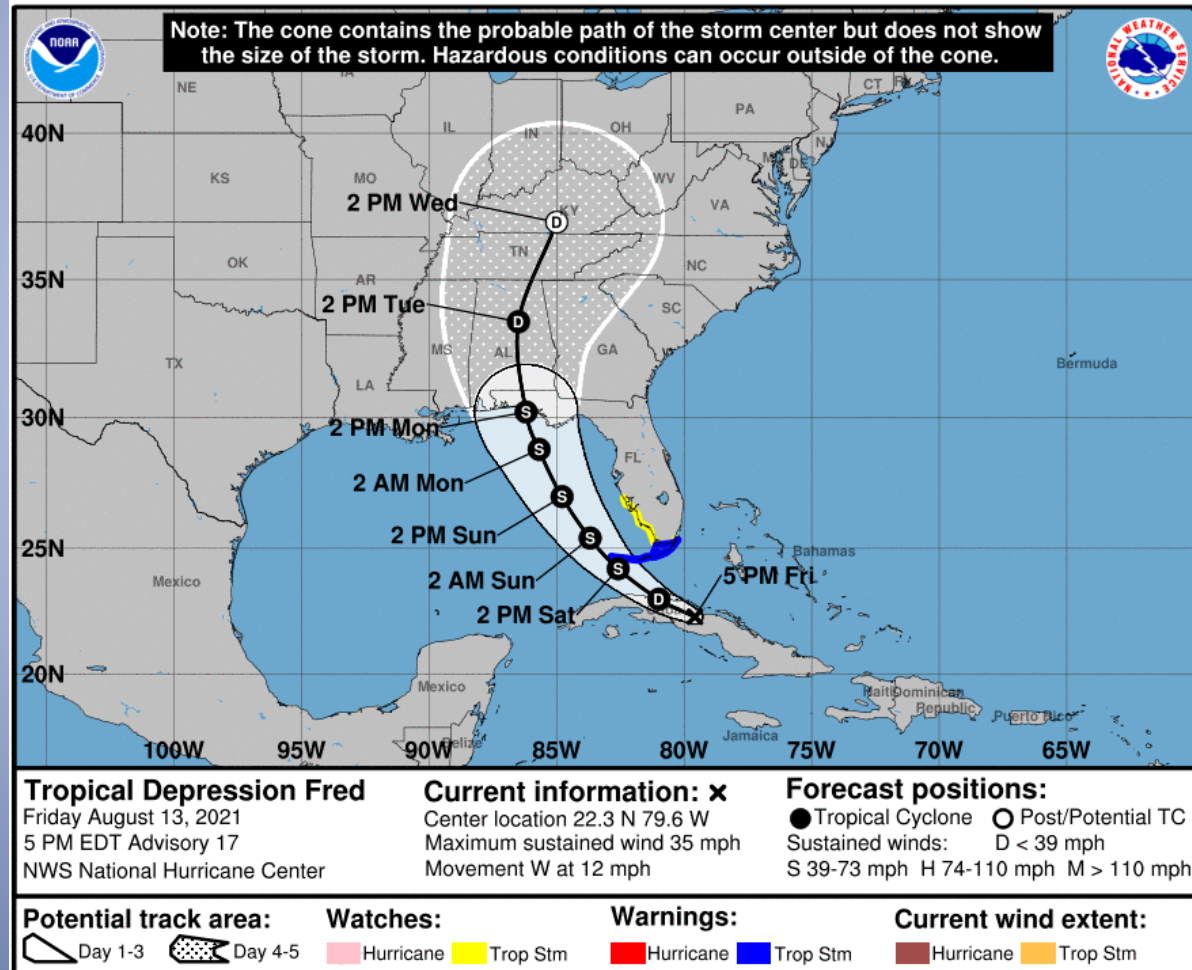
Chief Meteorologist Gary Stephenson
Spectrum News 1 North Carolina





Henri didn't come close to NC but created rough surf & dangerous rip currents at beaches resulting in numerous water rescues.

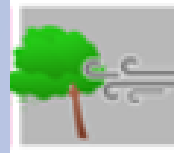
To sum up, do use the forecast cone to get a rough idea where the center of the storm may go and where coastal wind watches and warnings are in effect.



Since hazards associated with the storm usually extend beyond the edge of the cone, **don't** use the *NHC Forecast Cone* to assess your risk of:



Storm Surge



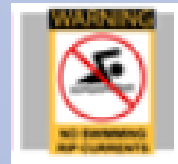
Strong Winds



Heavy Rain/Inland Flooding



Tornadoes



Rips Currents/Rough Seas

Instead, consult other forecast graphics for more specific information about strong winds, storm surge, rainfall, tropical tornadoes & rip currents at www.nhc.noaa.gov and your local NWS office.

Hurricane Irma

...IRMA MOVING THROUGH THE SOUTHEASTERN BAHAMAS AS AN EXTREMELY DANGEROUS CATEGORY 4 HURRICANE...

5:00 AM EDT Fri Sep 8

Location: 21.7°N 73.8°W
Moving: WNW at 16 mph
Min pressure: 925 mb
Max sustained: 155 mph

Public
Advisory
#37

500 AM EDT

Aviso
Publico
#37

500 AM EDT

Forecast
Advisory
#37

0900 UTC

Forecast
Discussion
#37

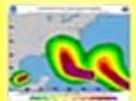
500 AM CDT

Wind Speed
Probabilities
#37

0900 UTC

NWS Local
Products
613 AM CDT

US Watch/
Warning
452 AM EDT



Wind Speed
Probabilities



Experimental Arrival
Time of Winds



Wind History



Warnings/Cone
Interactive Map



Warnings/Cone
Static Images



Warnings and
Surface Wind



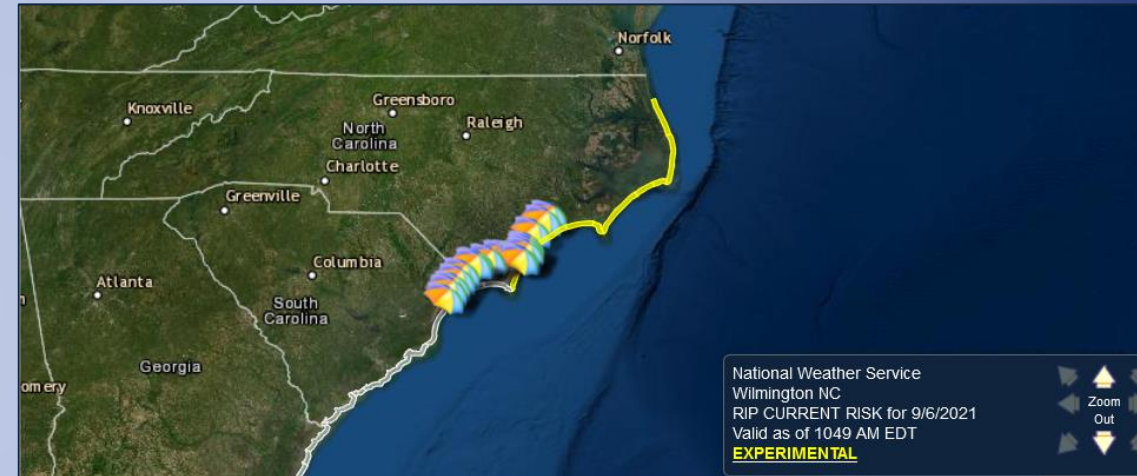
Storm Surge
Inundation



Storm Surge
Watch/Warning



U.S. Rainfall
Potential



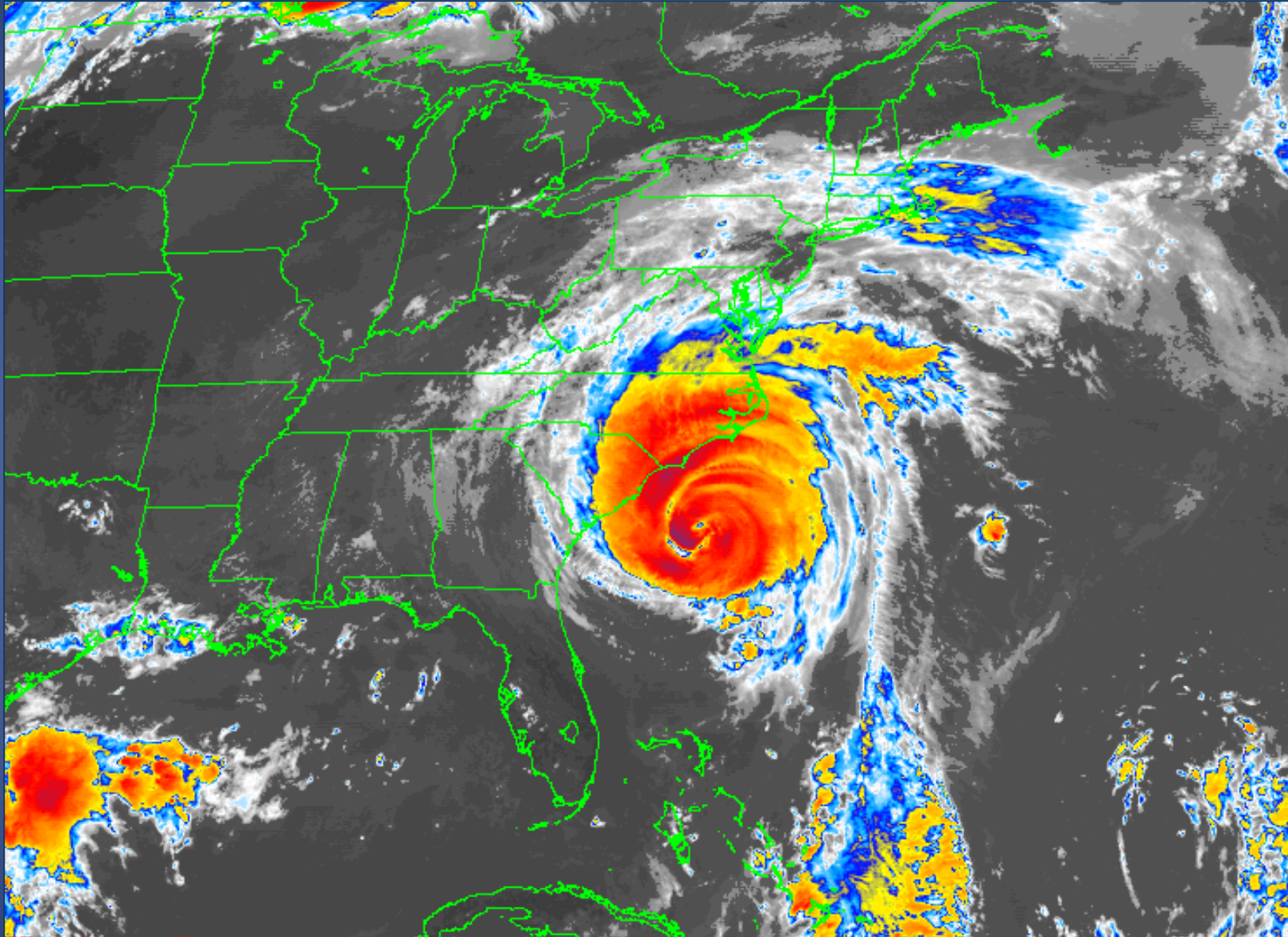
Risk Level	Description
Low	The risk of rip currents is low, however, life threatening rip currents may still occur especially near groins, jetties, reefs, and piers. Always swim near a lifeguard and remember to heed the advice of the local beach patrol and flag warning systems.
Moderate	Life threatening rip currents are possible. Always swim near a lifeguard and remember to heed the advice of the local beach patrol and flag warning systems.
High	Life threatening rip currents are likely. The surf zone is dangerous for all levels of swimmers. Stay out of the water. Remember to heed the advice of the local beach patrol and flag warning systems.

***Don't** use the cone to determine how you should prepare or evacuate for the storm.*

For that information, listen to your local emergency management agency.



www.ncpedia.org/media/evacuation-hurricane-floyd



BTW, who knows what hurricane this is? This was the last hurricane to make landfall in NC as a major hurricane.

Statistically, a hurricane makes landfall as a major hurricane about once every 11 years.

We are overdue!

Questions?

Sources

Cone of Uncertainty: Facts and Myths About This Tropical Forecasting Tool

<https://weather.com/science/weather-explainers/news/tropical-storm-cyclone-forecast-cone-hurricane>

Hurricane Ida expected to slam into Louisiana as 'extremely dangerous major hurricane'

<https://www.space.com/hurricane-ida-intensifies-extremely-dangerous-major-hurricane>

How to use the cone graphic – “The National Hurricane Center Cone of Uncertainty

https://www.nhc.noaa.gov/cone_usage.php

https://www.nhc.noaa.gov/graphics_at4.shtml?cone

